

KIT-FOG is a low-flow misting system ideal for propagation, or achieving cooling and humidification effects around patios, greenhouses, nurseries, and equine/animal areas. It includes 100 feet of poly tubing, 16 foggers with leak prevention/anti-drain (LPD) valves, and fittings to connect to a standard garden hose or faucet.

KIT-FOG | **FOGKIT**

INCLUDED IN THIS KIT:

- A. 16 - Fogger Nozzles
- B. 16 - Barb Base LPD
- C. 1 - 3/4" Filter
- D. 1 - Female Hose Adapter
- E. 1 - Tee
- F. 1 - Coupler
- G. 2 - Elbow
- H. 2 - Figure 8 Hose End
- I. 100ft. - Poly Supply Hose
- J. 1 - Hole Punch
- K. 10 -Mistake Hole Plugs

**Automation or Controller available as possible customization.*



KIT INSTRUCTIONS

1. Lay out poly supply hose (I) where you will run the foggers.
2. Use the provided fittings (E & G) to configure the layout.
3. Hook the filter (C) and the female hose adapter (D) to water supply and the inlet end of the poly hose.

4. Using the hole punch (J), make a pilot hole in the poly hose. The hole will be small and very tight to create a watertight seal.
5. For each fogger, press fit the barb base (B) and the fogger nozzle (A) together (DO NOT GLUE).
6. Push the barb base into the pilot hole until you hear a snapping sound. (Make sure the edge of the barb is

- going straight into the pilot hole and not at an angle.)
7. Flush the line before closing the end with the Figure 8 closure (H). To close, pass the line through one side of the figure 8; kink the hose back on itself and pass the hose end into the second hole of the figure 8.

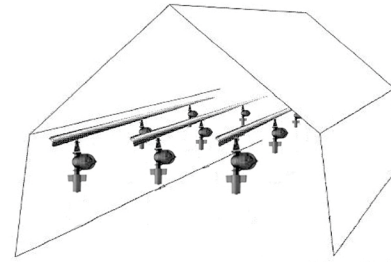
8. An extra poly hose coupling (F) and mistake hole plugs (K) are supplied if needed for repair.

**Call 1-800-SAY-RAIN for customized substitutions, options, and additional fittings.*

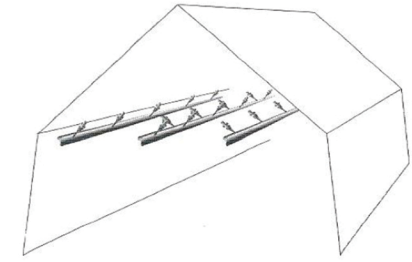
A. (16 Pieces) B. (16 pieces)



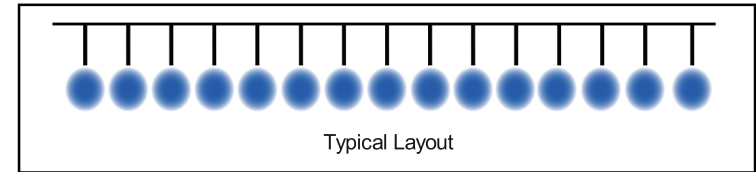
Example (A+B): LPD Adapter with Fog Tips



Typical Installation for Propagation

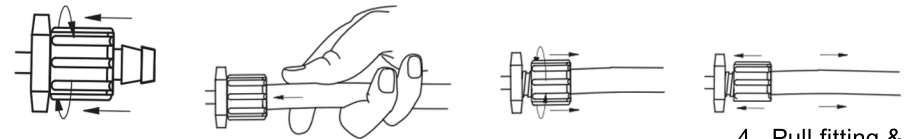


Typical Installation for Humidification



*Individual units typically placed at 2ft intervals.

HOSE-LOC FITTING TO HOSE INSTALLATION



1. Turn sleeve until it moves back against stop and barb is fully exposed.

2. Push hose over barb and as far as possible into sleeve opening.

3. Turn sleeve counter clockwise until it slides out and fits tightly onto the hose.

4. Pull fitting & hose firmly in opposite directions to insure that you have achieved a tight connection.