

LL36 PAR36

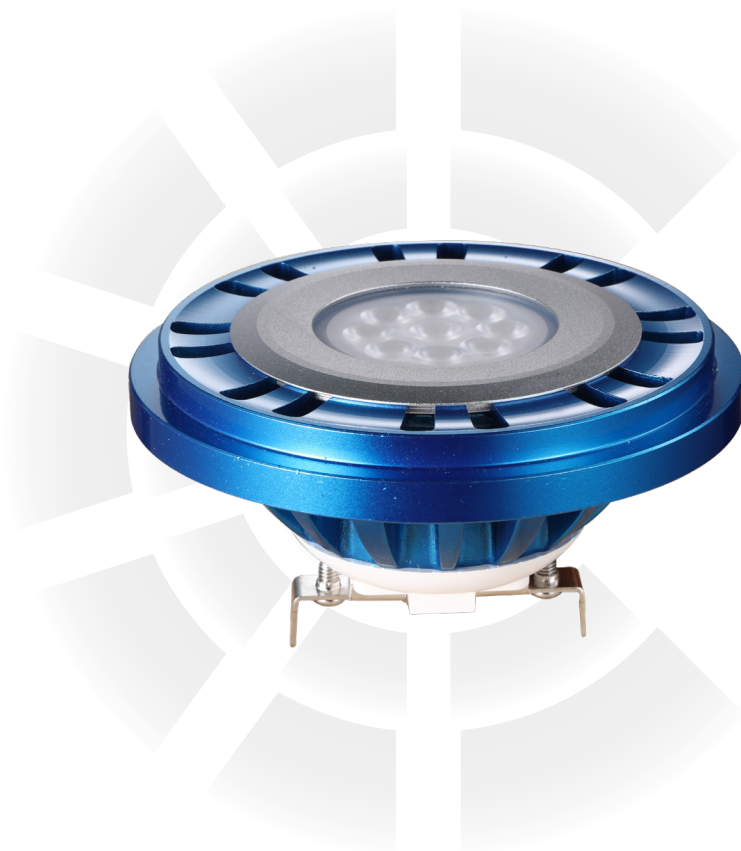


FEATURES:

- IP67 Waterproof
- Heat overload protection
- Dimmable with most magnetic transformers
- Fully potted PC board
- ETL & FCC compliant

Specifications:

- 9-17V / 12-24V
- CRI 85+
- IP67
- 7 years warranty



Item#	Wattage	Voltage	Color Temperature	Lumens	Beam Spread
LL366	6W	12-24V	2700K / 3000K	590lm	38°
LL3610	10W	12-24V	2700K / 3000K	800lm	60°
LL3613	13W	9-17V	2700K / 3000K	1130lm	
LL3617	17W	9-17V	2700K / 3000K	1300lm	

