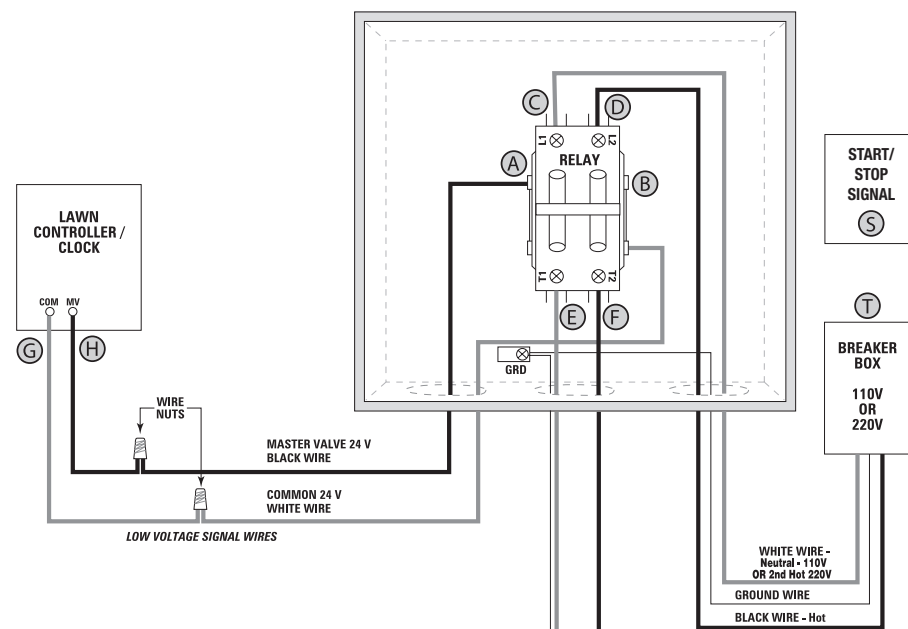
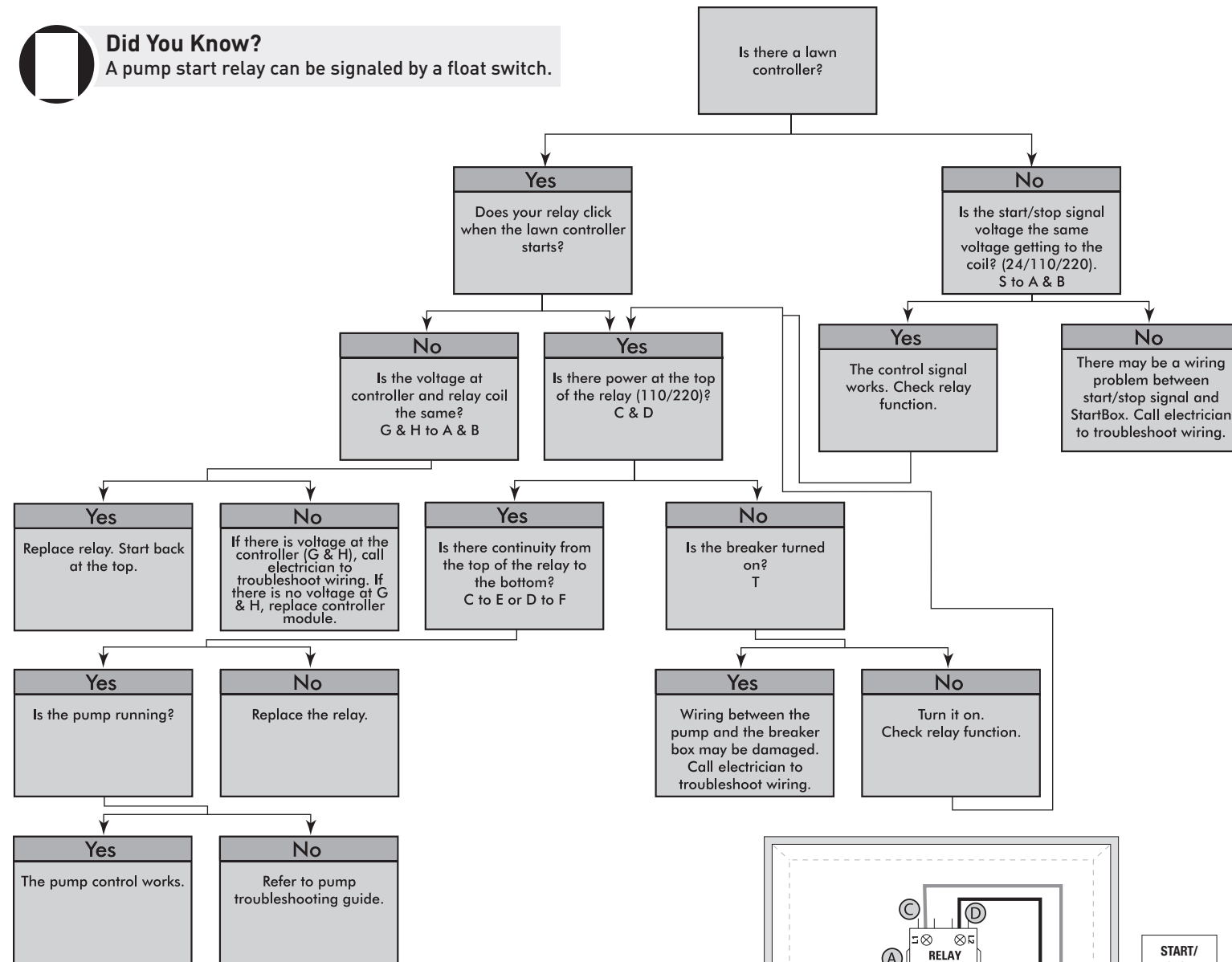


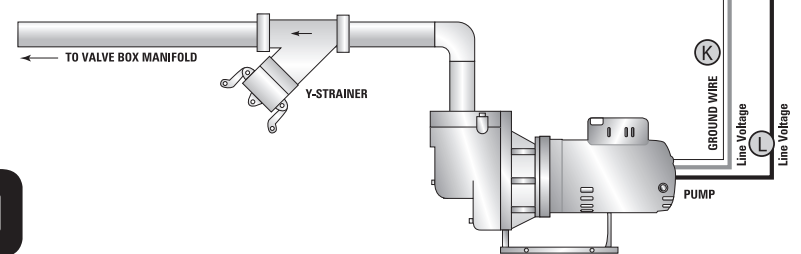
Did You Know?
A pump start relay can be signaled by a float switch.



Note: Start/Stop signals include, but not limited to, float switches, HOA's, timers etc.

Note: The StartBox & SmartBox troubleshooting guides do not apply to 2-wire decoder systems.

Call Munro technical support for any questions relating to this product.
Toll Free: 1.800.942.4270



OWNER'S MANUAL

MUNRO STARTBOX SERIES



Installation - Operation - Parts

Part Number	Line Voltage	Control Voltage	External Risk*	External Packaged Components
MPSR110	110 VAC	110 VAC		N/A
MPSR110A		24 VAC	Safe	N/A
MPSR110AU		24 VAC	Safe	Pump Up Float Control
MPSR110AD		24 VAC	Safe	Pump Down Float Control
MPSR220	220 VAC	220 VAC		N/A
MPSR220A		24 VAC	Safe	N/A
MPSR220AU		24 VAC	Safe	Pump Up Float Control
MPSR220AD		24 VAC	Safe	Pump Down Float Control
MPSR24	110/220 VAC	24 VAC		N/A

* Instead of using line voltage for power supply, external components are energized by a much lower, safer 24 VAC. Caution should always be used when dealing with electricity.

1.800.942.4270
www.munropump.com

Typical StartBox Installation

NOTE

Refer to specific wiring diagram located on inside cover of enclosure.

Step 1

Turn Breaker "OFF"

- Never work with electrical wiring on a live circuit.



Step 2

Wire Lawn Controller

- Locate the Master Valve (mv) and Common (com) inside Lawn Controller.
- Wire MV to BLACK wire lead in StartBox, secure with wire nuts.
- Wire COM to WHITE wire lead in StartBox, secure with wire nuts.

Step 3

Wire Relay to Pump

- Refer to wiring diagram on motor plate for proper voltage and wire placement.
- Refer to NEC wire cable chart for proper size of wire. Undersized wire can affect pump performance.

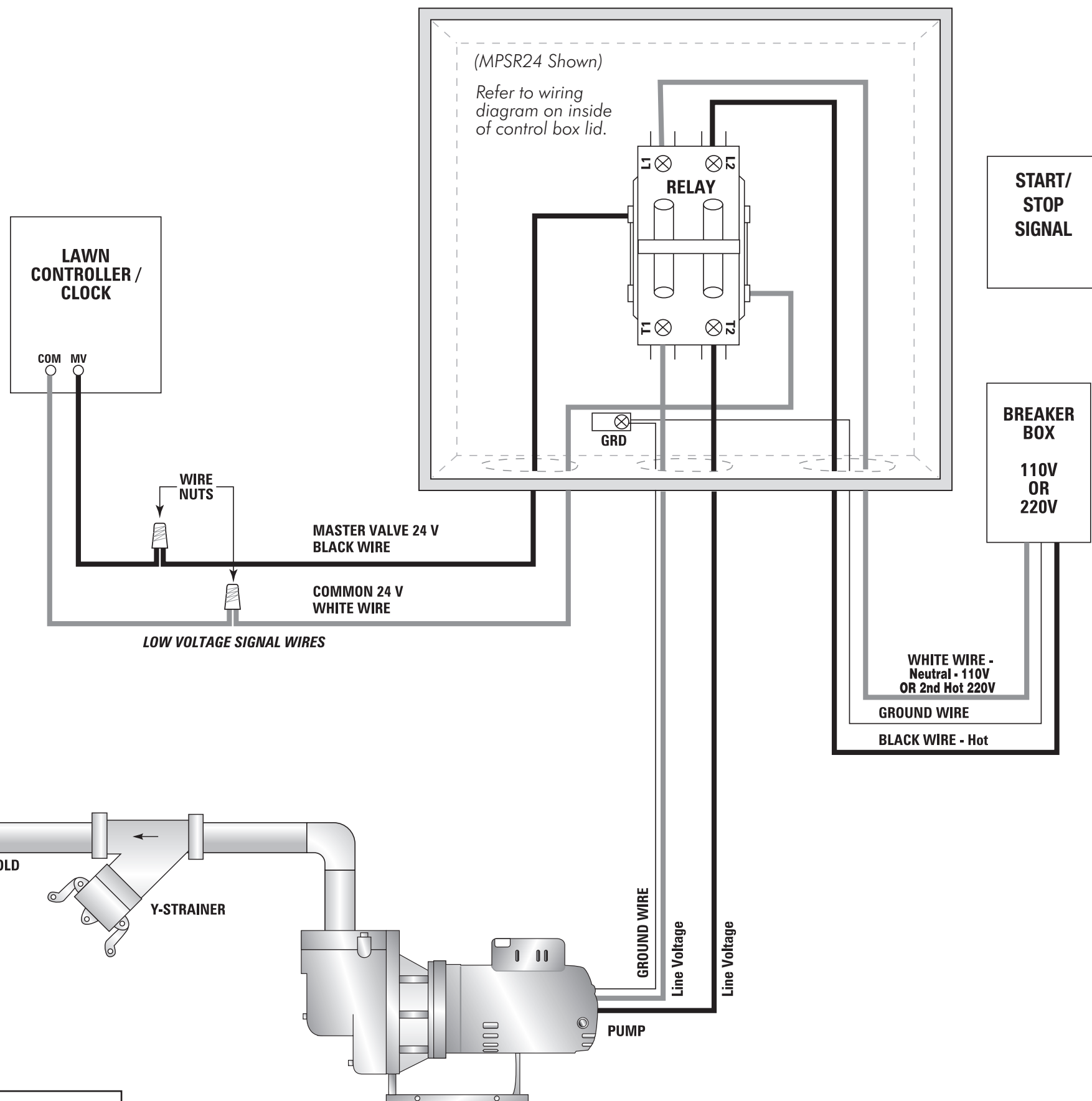
Step 4

Wire Power Supply

- Run power supply wires from breaker box (110 v or 220 v).
- Attach GREEN grounding wire. (Always use power service ground.)
- Attach BLACK HOT to L2 on relay.
- Attach WHITE Neutral (110 v) / second HOT (220 v) to L1 on relay.

Step 5

Turn Breaker "On"



WARNING

DO NOT ATTEMPT TO REWIRE OR ALTER WIRING IN THE STARTBOX OR WARRANTY WILL BE VOIDED.